



Scrivo is a highly configurable reporting suite, ready for integration into your software products and applications. Scrivo's component-based 'plug-in' architecture enables a high degree of extensibility, allowing you to adapt the suite to work with your bespoke data sources, and to report your data in the way you prefer.

Report generation

Scrivo combines data with report 'templates' to produce high quality reports in a variety of formats, including PDF, Word and Powerpoint. Specialised data types such as chemical structures, interactive drawings or documents can be incorporated as embedded objects wherever appropriate.

Scrivo can also export data without formatting, to produce Excel workbooks, or simple delimited or comma-separated datafiles.

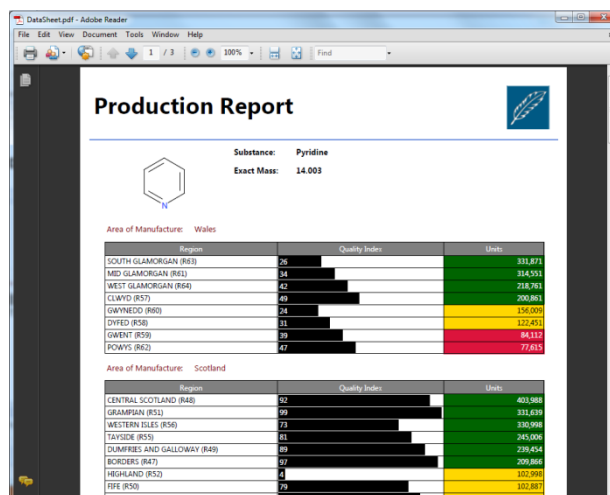


Figure 1: Bespoke data in a PDF report

Reports can be stored locally, streamed from a server, or saved into a database such as Oracle, DB2 or your own custom data store.

Report design

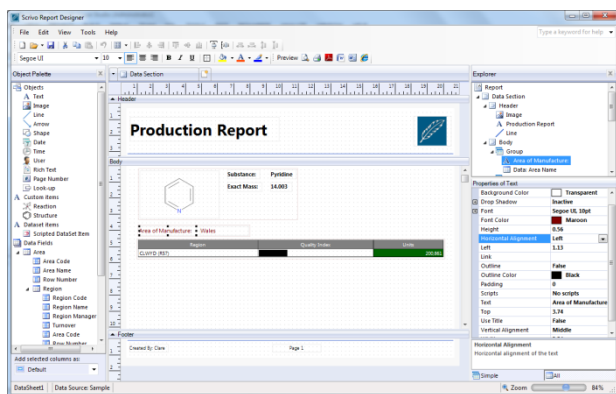


Figure 2: Scrivo Report Designer

The visual Report Designer helps you to design your report templates, with drag-and-drop selection and grouping of the data. Fine control over the presentation of each data item allows you to set up a report template to produce reports in exactly the format you need.

Advanced users of the Report Designer can add script in C#, Visual Basic or IronPython, with full access to all data, to perform complex bespoke calculations or a specialised rendering of an unusual data type.

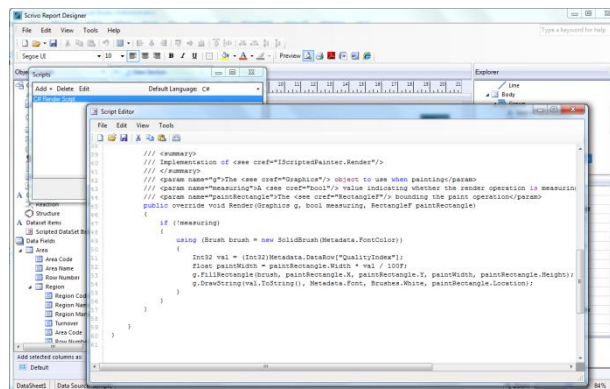


Figure 3: Scripting in the Report Designer



Integrating Scrivo

The Scrivo API enables full programmatic control of report generation, listing of available report templates and stored generated reports.

You can use the .Net assemblies directly in your Windows client application, or call the Scrivo RESTful web service from any suitable client application running on a PC, tablet or smartphone.

```
RunOptions options = new RunOptions();
options.PromptForOutputName = true;
options.ShowOutput = true;
options.FromPage = 3;
options.ToPage = 5;

reporter.Run("DataSheet.report", "Adobe Acrobat", options, RunMode.Interactive);
```

Figure 4: calling the Scrivo API to generate a report

Customisation

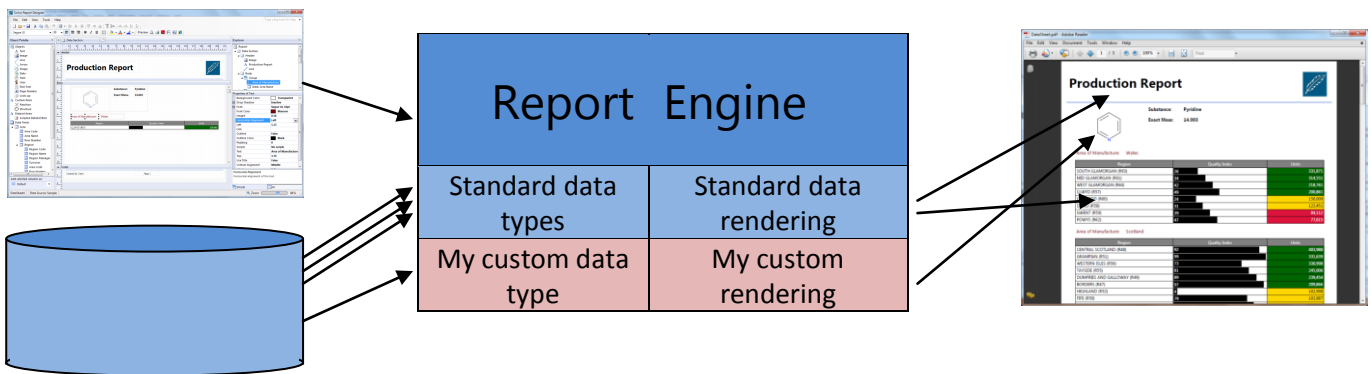


Figure 5: Scrivo's plug-in architecture

Scrivo's plug-in architecture enables you to add support for your own bespoke data types, and to add specialised rendering capabilities. Firbeck can undertake this customisation for you if you prefer, via our Professional Services team

System Requirements

Operating System	32-bit client	64-bit client	32-bit server	64-bit server
Microsoft Windows Vista, Business and Enterprise Editions, SP2	✓	✓		
Microsoft Windows 7, Professional and Enterprise Editions, SP1	✓	✓		
Microsoft Windows 8, Professional and Enterprise Editions	✓	✓		
Microsoft Windows 8.1, Professional and Enterprise Editions	✓	✓		
Microsoft Windows Server 2008 SP2			✓	✓
Microsoft Windows Server 2008 R2 SP1				✓
Microsoft Windows Server 2012				✓

Prerequisite software: .NET framework 3.5 or later